

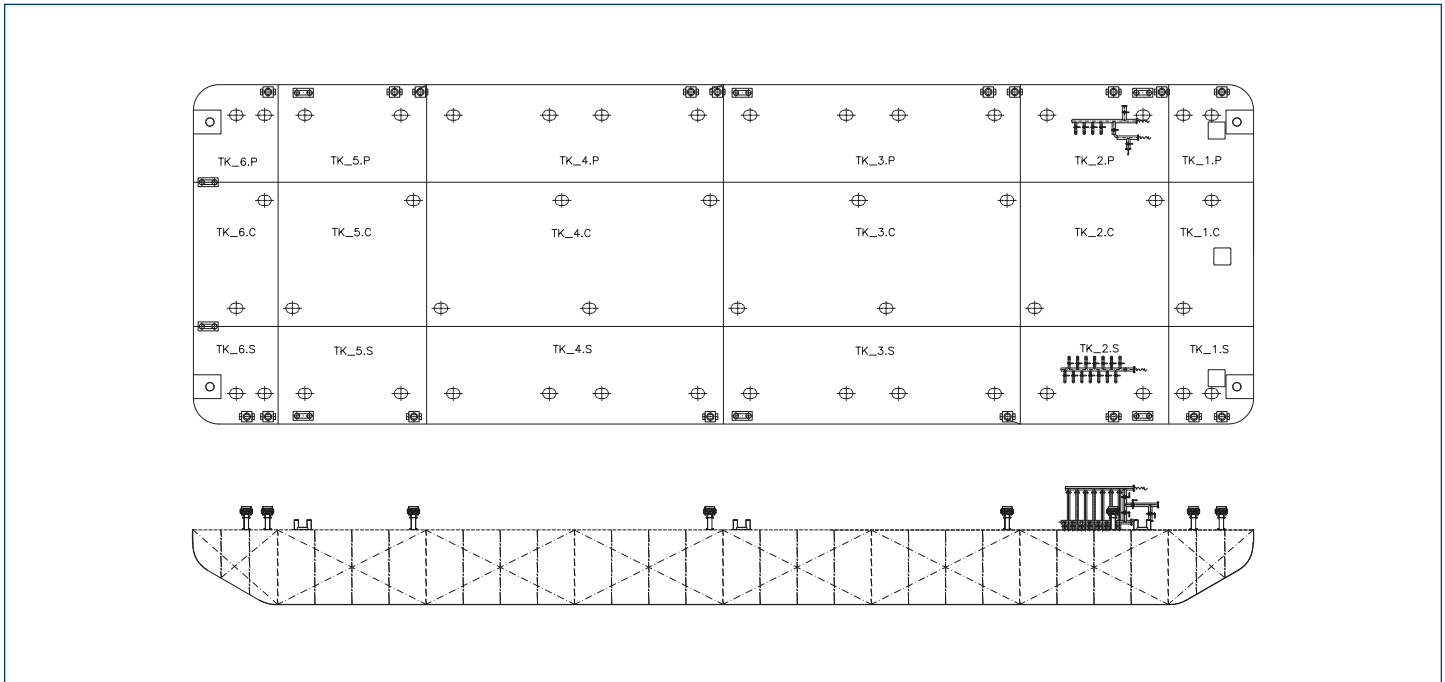


# CARTUBI

*The Past and Future of the Sea*



Flat Top Deck Barge  
**SUSANNA**



**MAIN DESCRIPTION**

Built	March 1979
Builder	Metallotecnica Veneta SpA - Marghera (Italy)
Owner	Cartubi S.r.l. - Trieste (ITALY)
Classification	RINA; ★ 100 -A -1 Pontoon, barge-tanker Int Coastal Area within 20NM
IMO number/Code	TS382
Port of Reg. / Flag	Trieste - Italy

**DECK CAPACITIES**

Deck area	800 m <sup>2</sup>
Uniform deck load	4,9 tons / m <sup>2</sup>
Point loads	Base on project
Bollards	18 pieces
Hull and structures	Raked bow and stern with skeg
Material protection	All steel shotblasted to SA 2,5 and primed according Jotum material protection. External and internal Cathodic protection. 5 years anode protect.

**MACHINERY**

Engine / Pumps	No engines
Submersible pump	1 portable electrical driven submersible pump for stripping etc.
Generator	n/a
Batteries	n/a

**MAIN PARTICULARS**

Loa	50,01 mt / 164 ft
Breath Moulded	15,96 mt / 52 ft
Depth Moulded	3,51 mt / 11 ft
Displacement	2483 tons
Deadweight	1550 tons
Light Weight	428 tons
GRT	710 tons
NET	385 tons

**BALLAST PUMP CAPACITIES**

Tank Arrangement	6 ballast tank served from one pump room
Pump capacity	1 x 180 m <sup>3</sup> /h

**DECK EQUIPMENT**

Navigation lights	Removable LED lights
Anchor	n/a
Anchor winch	n/a
Towing arrangement	Smith's Brackets towing arrangement for main and emergency towing