



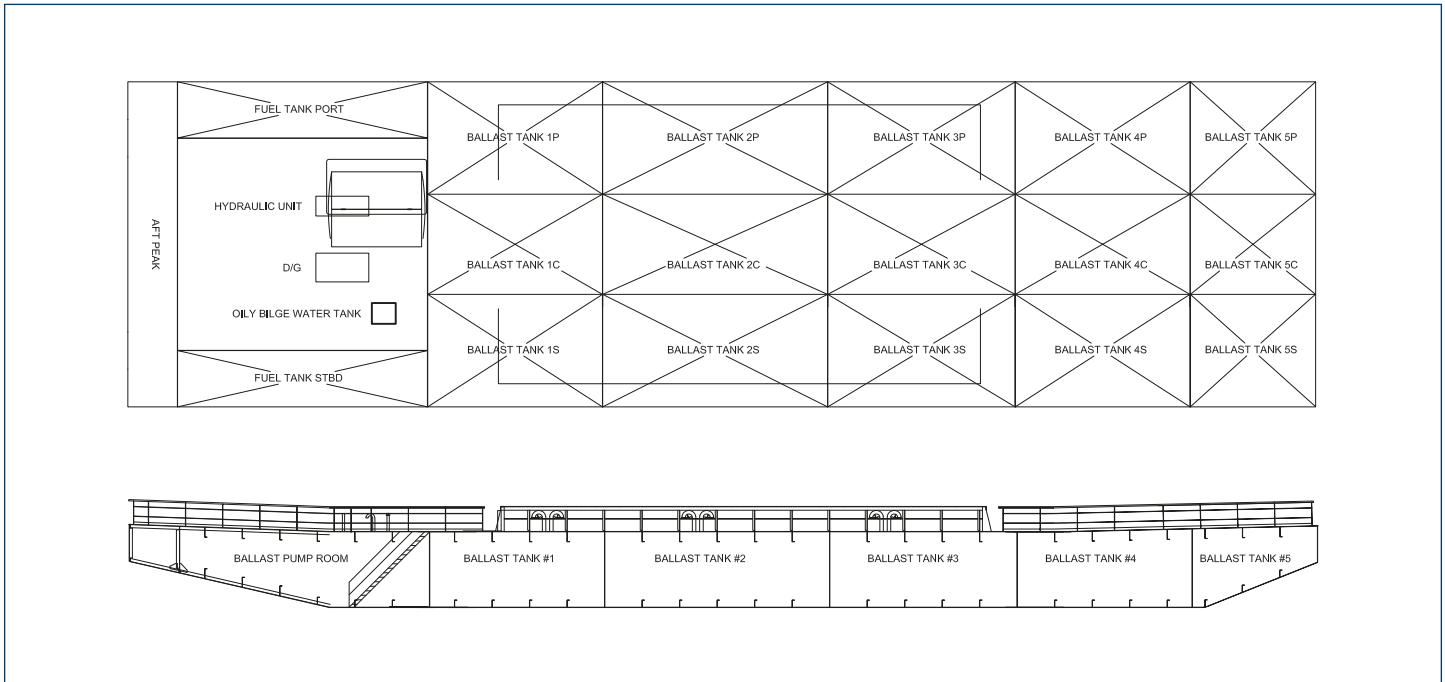
CARTUBI

The Past and Future of the Sea



Flat Top Deck Barge

LUNA



MAIN DESCRIPTION	
Built	January 2008
Builder	Corina Srl – Borbaigo di Mira (ITALY)
Owner	Cartubi S.r.l. – Trieste (ITALY)
Classification	RINA - C ✘ Pontoon, special navigation with 50NM
IMO number/Code	TS590
Port of Reg. / Flag	Trieste - Italy

MAIN PARTICULARS	
Loa	47,60 mt / 156 ft
Breath Moulded	13,00 mt / 42 ft
Depth Moulded	3,01 mt / 10 ft
Displacement	1134 tons
Deadweight	713 tons
Light Weight	421 tons
GRT	459 tons
NET	137 tons

DECK CAPACITIES	
Deck area	610 m ²
Uniform deck load	10 tons / m ²
Point loads	Base on project
Bollards	8 pieces
Hull and structures	Raked bow and stern with skeg
Material protection	All steel shotblasted to SA 2,5 and primed according Jotum material protection. External and internal Cathodic protection. 5 years anode protect.

BALLAST PUMP CAPACITIES	
Tank Arrangement	16 ballast tank
Pump capacity	2 x 42 m ³ /h

MACHINERY	
Engine / Pumps	Not applicable
Submersible pump	Not applicable
Generator	Not applicable
Batteries	Not applicable

DECK EQUIPMENT	
Navigation lights	Removable LED lights
Anchor	Not applicable
Anchor winch	Not applicable
Towing arrangement	Smith's Brackets towing arrangement for main and emergency towing