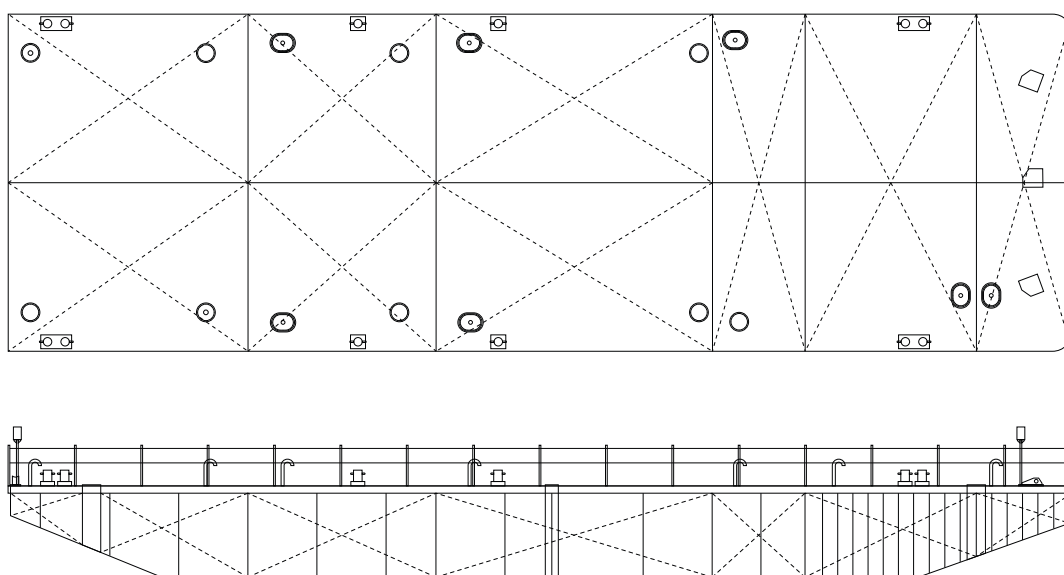




The Past and Future of the Sea



Flat Top Deck Barge
LUCIO I



MAIN DESCRIPTION

Built	October 1974
Builder	HARDINXVELD (The Netherlands)
Owner	Cartubi S.r.l. – Trieste (ITALY)
Classification	RINA - C ✂ Pontoon, coastal area within 20NM
IMO number/Code	TS569
Port of Reg. / Flag	Trieste - Italy

DECK CAPACITIES

Deck area	385 m ²
Uniform deck load	from 4 to 6 tons / m ²
Point loads	Base on project
Bollards	8 pieces
Hull and structures	Raked bow and stern with skeg
Material protection	All steel shotblasted to SA 2,5 and primed according Jotum material protection. External and internal Cathodic protection. 5 years anode protect.

MACHINERY

Engine / Pumps	Not applicable
Submersible pump	Not applicable
Generator	Not applicable
Batteries	Not applicable

MAIN PARTICULARS

Loa	35,00 mt / 115 ft
Breath Moulded	10,98 mt / 36 ft
Depth Moulded	3,05 mt / 10 ft
Displacement	250 tons
Deadweight	550 tons
Light Weight	250.1 tons
GRT	274 tons
NET	82 tons

BALLAST PUMP CAPACITIES

Tank Arrangement	06 ballast tank
Pump capacity	not applicable

DECK EQUIPMENT

Navigation lights	Removable LED lights
Anchor	Not applicable
Anchor winch	Not applicable
Towing arrangement	Smith's Brackets towing arrangement for main and emergency towing