



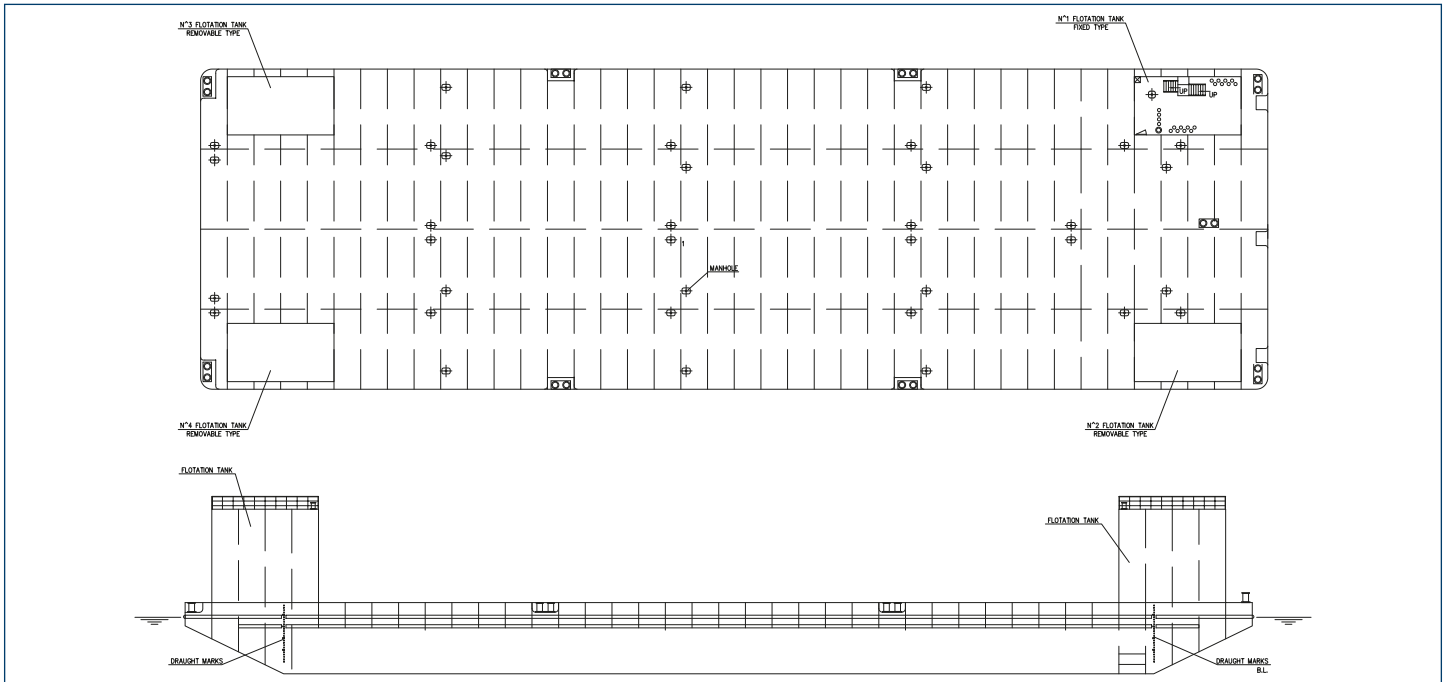
CARTUBI

The Past and Future of the Sea



Semi-submersible Heavy Lift Barge

ANT



MAIN DESCRIPTION

Built	January 2001
Builder	DALIAN Shipyard (Cina)
Owner	OC Lift S.r.l. – Trieste (ITALY)
Classification	RINA - C ✕ Pontoon, unrestricted navigation
IMO number/Code	8638700
Port of Reg. / Flag	Valletta - Malta

DECK CAPACITIES

Deck area	2508 m ²
Uniform deck load	25 tons / m ²
Point loads	Base on project
Bollards	10 pieces
Hull and structures	Raked bow and stern with skeg
Material protection	All steel shotblasted to SA 2,5 and primed according Jotum material protection. External and internal Cathodic protection. 5 years anode protect.

MACHINERY

Engine / Pumps	2 x diesel driving 2 centrifugal pumps
Submersible pump	1 portable electrical driven submersible pump for stripping etc.
Generator	2 x diesel engine 35 kVA / 380V-3ph-50Hz
Batteries	2 x 24 V / 115 AH

MAIN PARTICULARS

Loa	91,440 mt / 300 ft
Breath Moulded	27,432 mt / 90 ft
Depth Moulded	6,10 mt / 20 ft
Displacement	2538 tons
Deadweight	9040 tons
Light Weight	2420 tons
GRT	4485 tons
NET	1345 tons

BALLAST PUMP CAPACITIES

Tank Arrangement	20 ballast tank served from one pump room
Pump capacity	2 x 600 m ³ /h

DECK EQUIPMENT

Navigation lights	LED lights plus Emergency Propane Gas lantern
Anchor	Type Pool, weight 4000 Kg
Anchor winch	Plimsoll hydraulic winch
Towing arrangement	Smith's Brackets towing arrangement for main and emergency towing